

---

*CAUTION! Surface mount SMA connectors on ARF/XRF*

---

Date: 13 September 2016

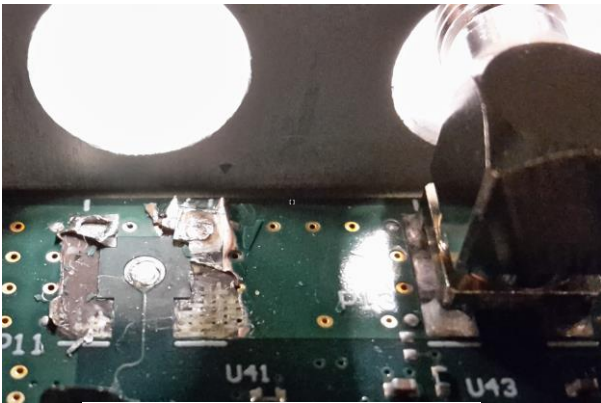
Dear ARF/XRF users,

The SMA connectors on our RF synthesizers (ARF and XRF) are surface-mount devices. Some customers have discovered that they can be broken off the board if over-tightened or stressed incorrectly (see photos below).

The recommended torque is 0.3 to 0.6 N.m (3 to 5 in.lb) for brass connectors or 0.8 to 1.1 N.m (7 to 10 in.lb) for stainless. That is equivalent to about 1kg at a 100mm radius: strong force is not required!

Rigid cables should be avoided (and are overkill given 400 MHz maximum frequency).

Please take appropriate care! Damage of this kind cannot be repaired and the entire assembled PCB must be replaced at very high cost.



Example of PCB damage



Broken connector